

WAREHOUSE OR
MANUFACTURING BUILDING
FOR SALE OR LEASE



DEXTER
MO.

CONTENTS

1. Cover - Front View of Building
2. Contents
3. About the Building
4. About the Site
5. View of Interior Looking at Southeast Corner of Building
6. View of Interior Looking at South Center of Building
7. View of Interior Looking at Southwest Corner of Building

BUILDING SPECIFICATIONS

200' x 390' x 20' Butler LRF II Pre-Engineered Metal Building with the following specifications:

30'-0" x 66'-8" Bay Spacing
30# Snow Load (27# Roof Load + 3# Sprinkler Load)
80 M.P.H. Wind Load

MR-24 Standing Seam Roof 24 Gauge
6" Vinyl Faced Fiberglass Insulation

26 Gauge Wall Panels
3" Vinyl Faced Fiberglass Insulation

8 - 9'x 10' Insulated Overhead Dock Doors
1 - 12'x 14' Insulated Overhead Door (Floor Grade)
8 - Pel 87 7'-0"x 8'-0" 20,000 lb. Dock Levelers
8 - Series 1400 Dock Door Trailer Seals
4 - 3 x 7 Emergency Exit Doors

GENERAL SPECIFICATIONS

The building has the typical concrete grade beams for Metal Building construction.

Concrete floors vary from 5" to 6" non-reinforced. Floor grade is 367.00 which is the same as the Purolator Manufacturing Facility.

OFFICE - 30 x 30 finished office area
Air Conditioned - 2-Toilet Facilities

HEAT - 10-Suspended N. G.
400,000 BTU Units
4" N. G. Service to Building

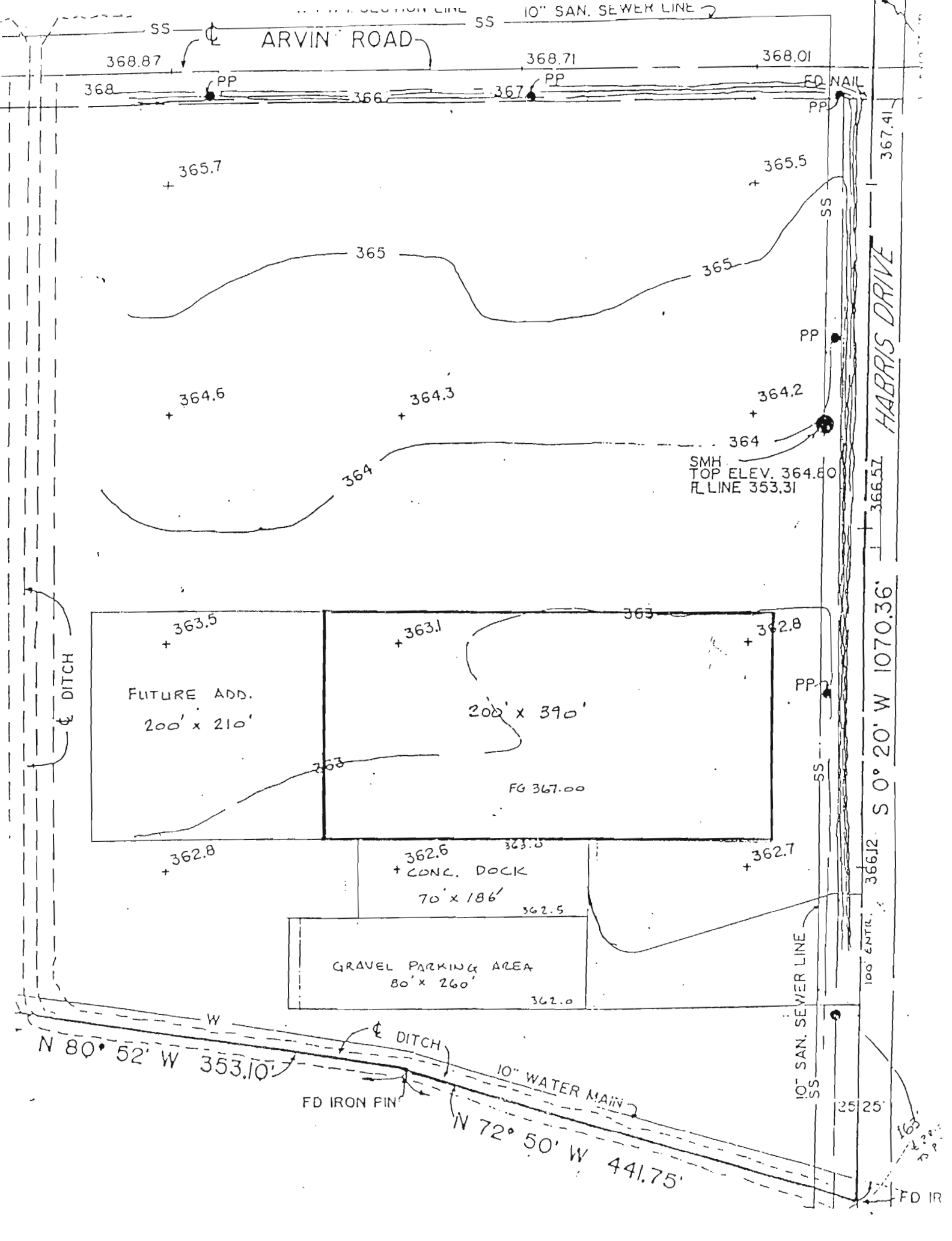
ELECTRIC - 800 AMP Service Present
3 phase/Adequate Overhead Lighting

SPRINKLERS - Installed to Factory Mutual Specifications

ADDRESS ALL INQUIRIES TO:

TREY PARSONS
Telephone: (573) 624-5901
Fax: (573) 624-5443
E-Mail: plcd9@midwest.net

or C. H. PARSONS, JR.
Telephone: (573) 624-5901
Fax: (573) 624-5443
E-Mail: plcd9@midwest.net



ARVIN ROAD

10" SAN. SEWER LINE

368.87 368.71 368.01

368 366 367 365

+ 365.7

+ 365.5

+ 364.6

+ 364.3

+ 364.2

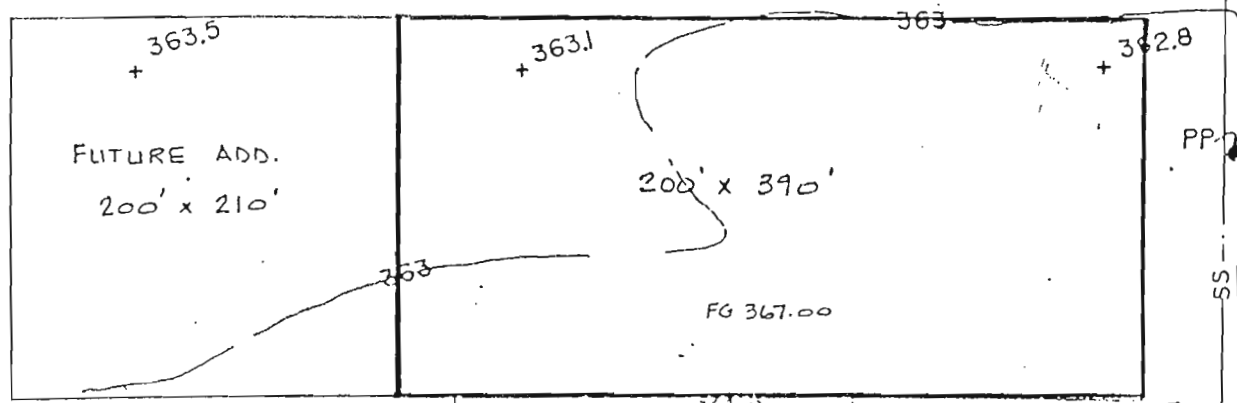
SMH
TOP ELEV. 364.80
R.L. LINE 353.31

HABBRIS DRIVE

366.57

S 0° 20' W 1070.36'

100' ENTR.



+ 363.5

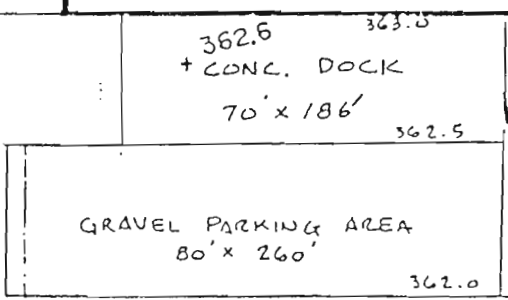
+ 363.1

+ 362.8

+ 362.8

+ 362.6

+ 362.7



N 80° 52' W 353.10'

N 72° 50' W 441.75'

FD IRON FIN

10" WATER MAIN

10" SAN. SEWER LINE

25' 25'

FD IR





